



Daily Meals

Monday through Saturday

8:30 a.m. to 12 p.m. **New Life Day Center**

(Closes at 11 a.m. on Saturday)

9 a.m. to 10 a.m. **Catholic Action Center**

9 a.m. to 10 a.m. **Lexington Rescue Mission**

9 a.m. to 2 p.m. **Nathaniel Mission**

12 p.m. to 12:30 p.m. **St. Paul Catholic Church**

(Monday through Friday only)

12:30 p.m. to 1 p.m. **Catholic Action Center**

12 p.m. to 1 p.m. **Lexington Rescue Mission**

12 p.m. to 1 p.m. **Lighthouse Ministries**

5 p.m. to 6 p.m. **Hope Center**

5:30 p.m. to 6 p.m. **Catholic Action Center**

5:30 p.m. to 6:30 p.m. **Lighthouse Ministries**

Sunday

9:30 a.m. to 10:30 a.m. **Nathaniel Mission**

9:30 a.m. to 10 a.m. **Catholic Action Center**

12 p.m. to 1 p.m. **Catholic Action Center**

2 p.m. to 4:30 p.m. **Church Under The Bridge**

(Meets at Broadway Christian Church)

5 p.m. to 6 p.m. **Hope Center**

5 p.m. to 6 p.m. **Lighthouse Ministries**

(must attend the 4 pm service)

5:30 p.m. to 6:30 p.m. **Catholic Action Center**



Transportation

Catholic Action Center Compassionate Caravan

(Operates during extreme heat and freezing weather.)

Maxwell Street Presbyterian Church

(Bus passes on 1st Wednesday of month at 9 a.m.)



Additional Meals

Bread of Life Ministries at Broadway Christian Church

Wednesday and Friday from 3 p.m. to 4 p.m.

The Gathering at Embrace Church

Monday from 4 p.m. to 6:30 p.m.

Maxwell Street Presbyterian Church

Thursday at 5:30 p.m.

The Share Center

Monday and Tuesday from 11 a.m. to 12 p.m. (meal "kit" only)

The 1st and 3rd Saturday of the month from 12 to 1 p.m.



Clothing

Calvary Baptist Church

Every other Thursday from 11 a.m. to 1 p.m.

Call (859) 254-3491

Lexington Rescue Mission

Tuesday, Wednesday, and Thursday from 1 p.m. to 3 p.m.

Nathaniel Mission

Monday through Thursday from 9 a.m. to 2 p.m.

The Salvation Army

Monday through Friday from 9 a.m. to 11:45 a.m.



Laundry

Arbor Youth Services

Lexington Rescue Mission

Lighthouse Ministries



Lockers

New Life Day Center



Showers

Arbor Youth Services

New Life Day Center

New VISTA Drop-In Center



Day Centers

Arbor Youth Servies - serves youth up to 24

Open Monday, Tuesday, Thursday, Friday from 9 a.m. to 4 p.m.

Lexington Rescue Mission - open to everyone

The Outreach Center is open Monday & Friday 9 a.m. to 3 p.m.

Tuesday, Wednesday, Thursday from 9 a.m. to 4 p.m., and Saturday from 10 a.m. to 1 p.m.

Nathaniel Mission - Open to everyone

Open Monday through Thursday from 9 a.m. to 4 p.m.

New Life Day Center - open to everyone

Open Monday through Friday from 8:30 a.m. to 2 p.m. and Saturday from 8:30 a.m. to 11 a.m.

New VISTA Drop-In Center - serves adults experiencing mental health issues, substance abuse, or homelessness

Open Monday through Friday from 8 a.m. to 11:30 a.m. and 12:30 p.m. to 4 p.m.



Overnight Shelters

Arbor Youth Services — serves children and youth

Emergency Shelter for children ages 0-17 is open 24-7.

Overnight shelter for 18-24 year-olds is open 8 p.m. to 7 a.m.

Catholic Action Center — serves adult men and women

Beds must be reserved for the week on Sunday at 1 p.m., except in freezing conditions when all are welcome to stay.

Greenhouse 17 — serves men, women, and families who are experiencing intimate partner abuse

Call the emergency hotline at (800) 544-2022.

Hope Center — serves men who are 18 and older

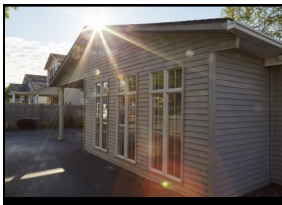
Emergency shelter is open 24-7 for new residents. Clients must arrive by 8 p.m.

Room in the Inn — serves men during winter months

Apply August through October for the program that runs November through March. Applications online at ritilex.org.

The Salvation Army — serves single adults identifying as women and families with children

Emergency shelter is open 24-7 for residents.



Lexington Rescue Mission
444 Glen Arvin Ave.



Share Center
572 Georgetown St.



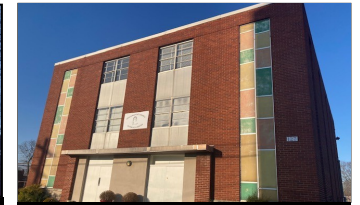
Hope Center
360 W. Loudon Ave.



New Vista Drop-In Center
201 Mechanic St. (2nd Fl.)



Embrace Church
1015 N. Limestone



Grace Baptist Church
811 Bryan Ave.



Arbor Youth Services
536 W. Third St.



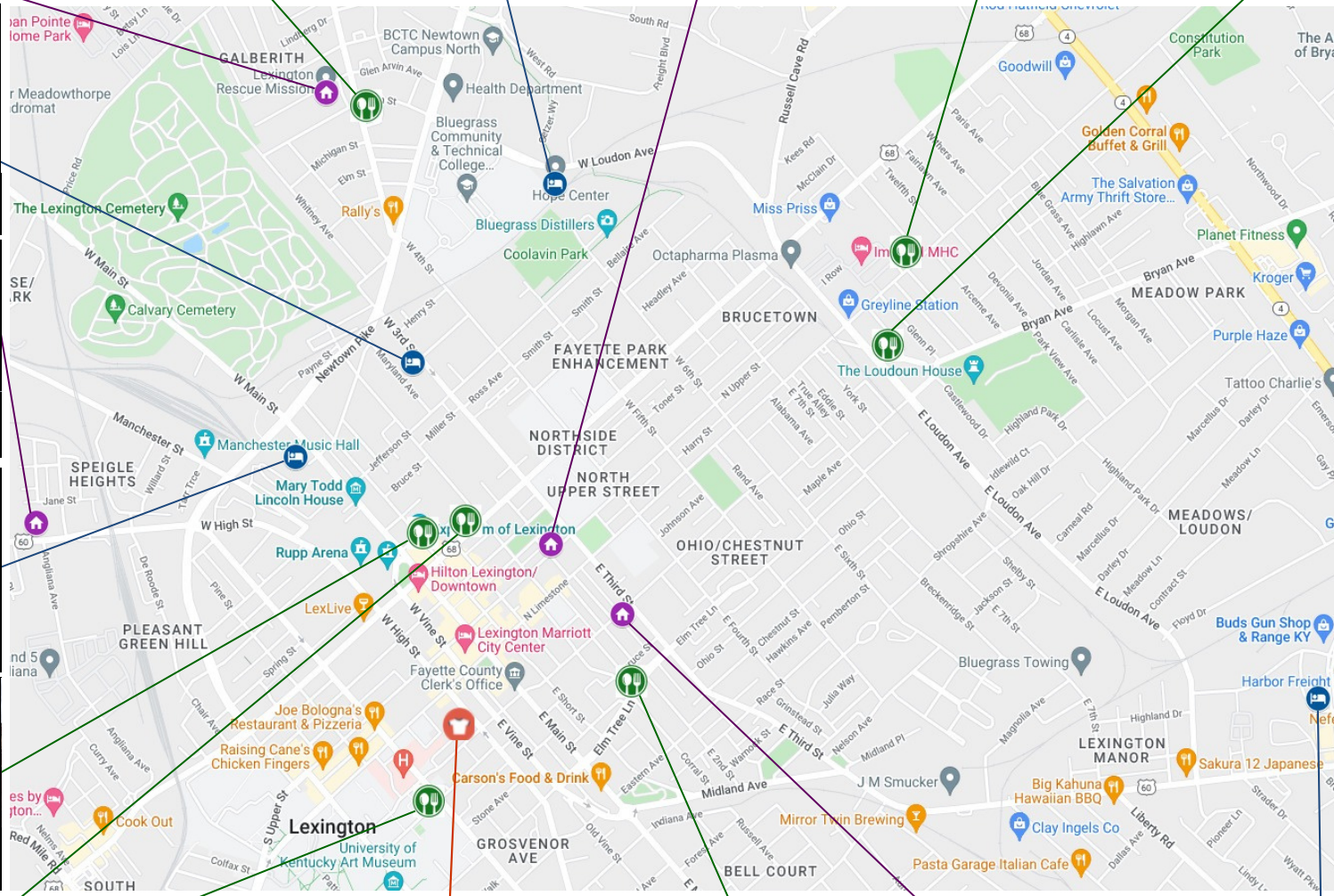
Nathaniel Mission
1109 Versailles Rd.



The Salvation Army
736 W. Main St.



St. Paul Catholic Church
425 W. Short St.



2024 Lexington Resource Guide

-  **Clothing**
-  **Day Centers**
-  **Laundry**
-  **Lockers**
-  **Meals**
-  **Night Shelter**
-  **Showers**
-  **Transportation**

Legend



Broadway Christian Church
187 N. Broadway



Maxwell St. Presbyterian
180 E. Maxwell St.



Calvary Baptist Church
150 East High St.



Lighthouse Ministries
190 Spruce St.



New Life Day Center
224 N. MLK Blvd.



Catholic Action Center
1055 Industry Rd.